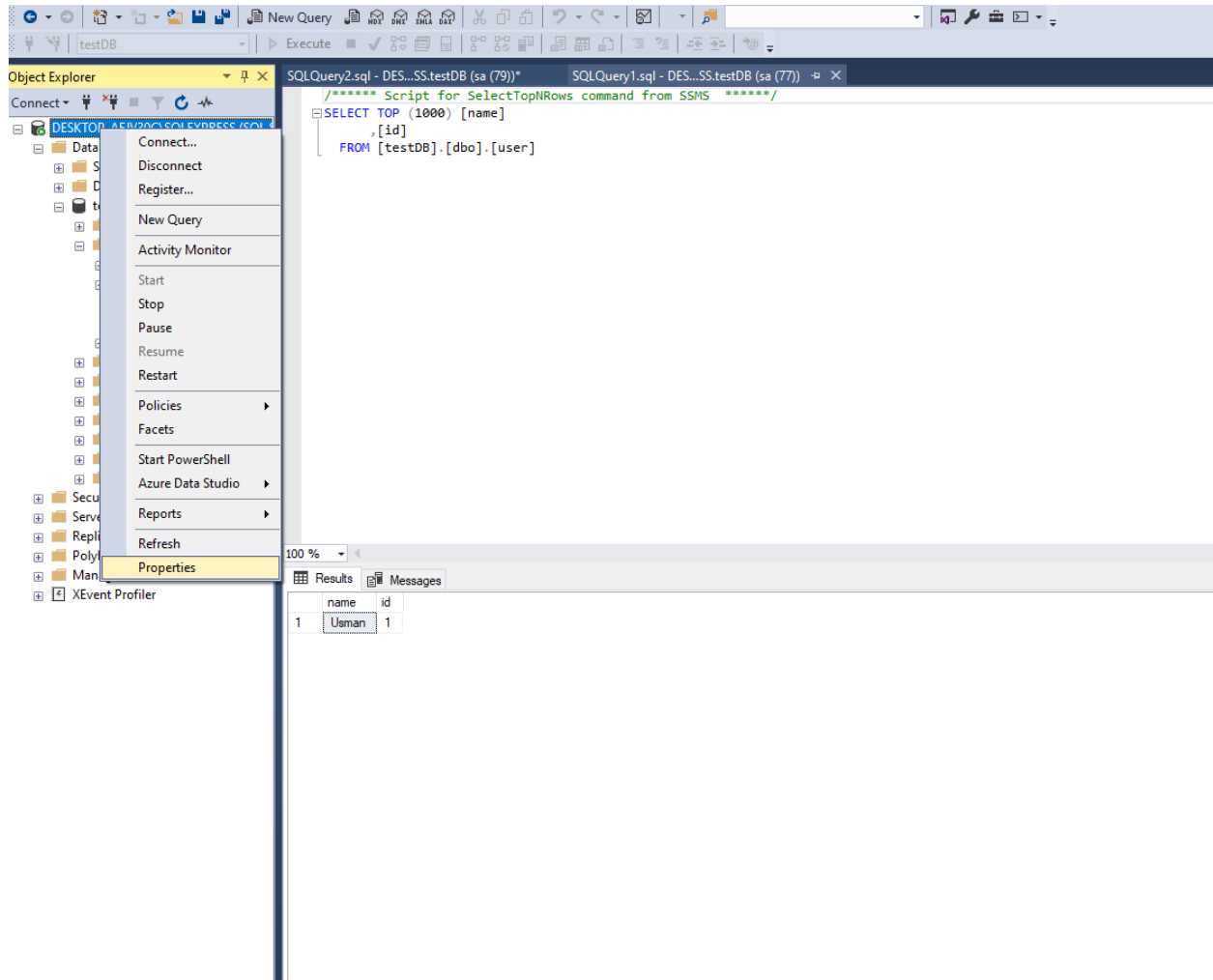


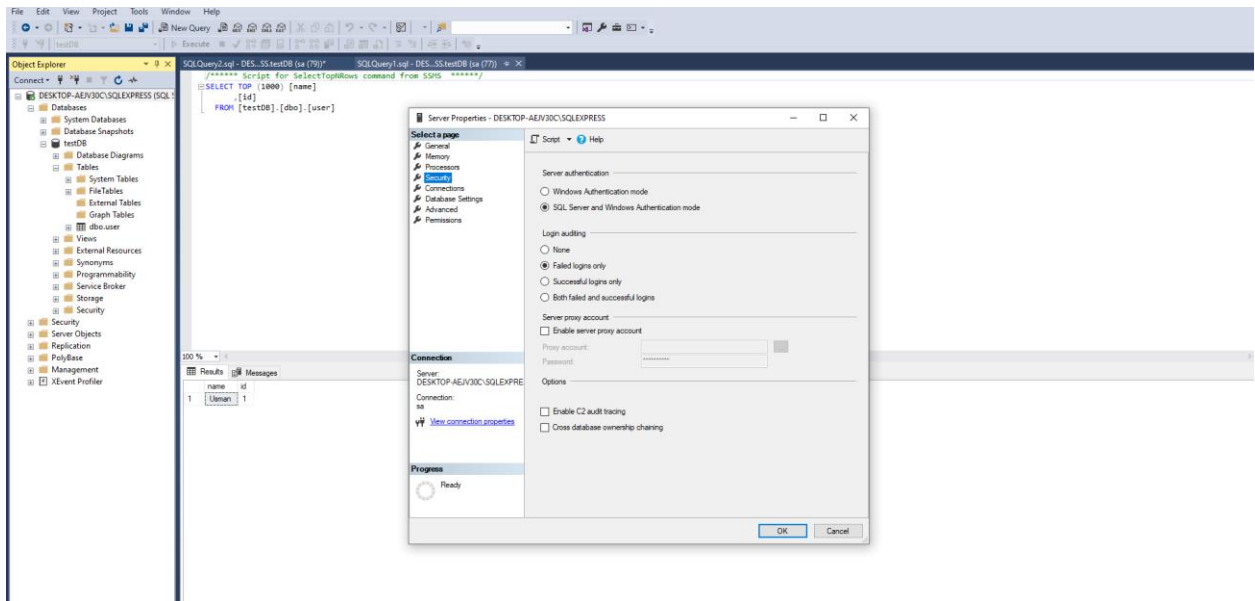
# MICROSOFT SQL SERVER 2019

## STARTING CONFIGURATION

- Open **SQL server Management Studio**
- On the left side of window tab is **object explorer**
- In the tab **Right click on server** and click on **properties**



- Select **Security** from the left side of window
- Select bullet **SQL Server and windows Authentication Mode**



- Select Security from **DataBase**
- Select **Logins**
- Right click on **sa** and select properties

The screenshot displays the SQL Server Enterprise Manager interface. On the left, the Object Explorer shows the 'Security' folder expanded to 'Logins'. The 'sa' login is selected, and a context menu is open over it, with 'Properties' highlighted. The main window shows a SQL query being executed in a query editor:

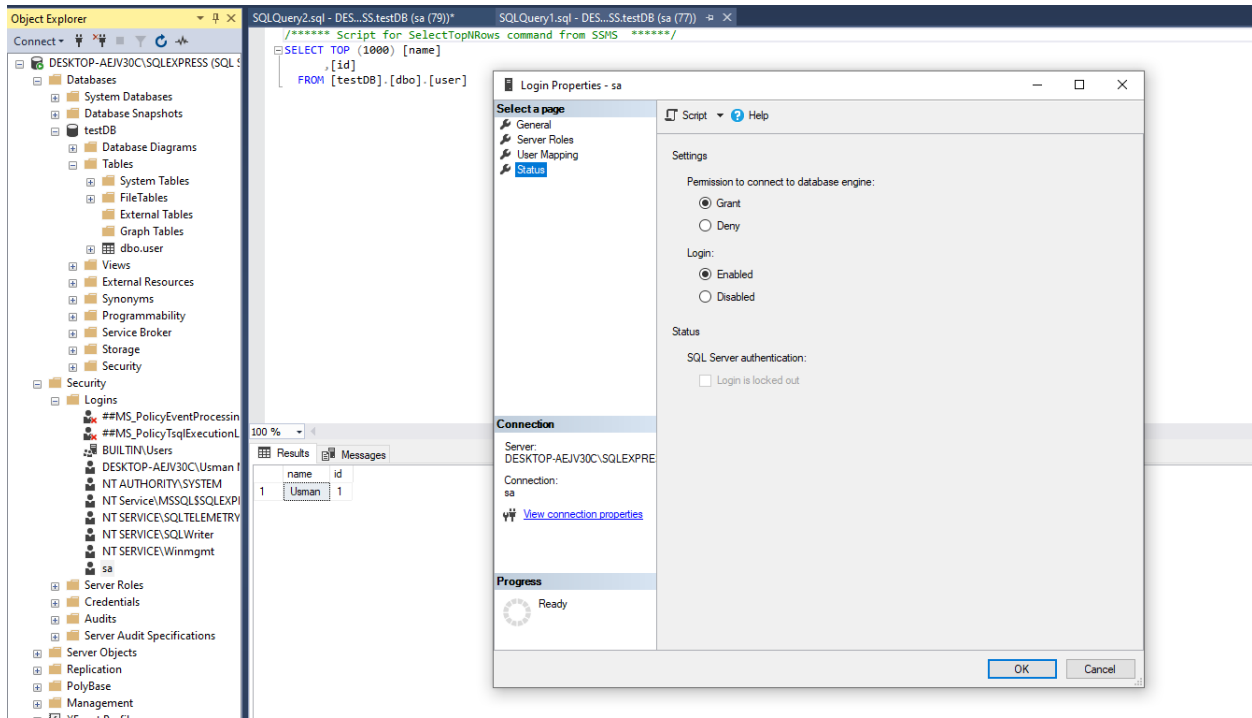
```
/****** Script for SelectTopNRows command from SSMS *****/  
SELECT TOP (1000) [name]  
      ,[id]  
FROM [testDB].[dbo].[user]
```

The Results pane shows the following data:

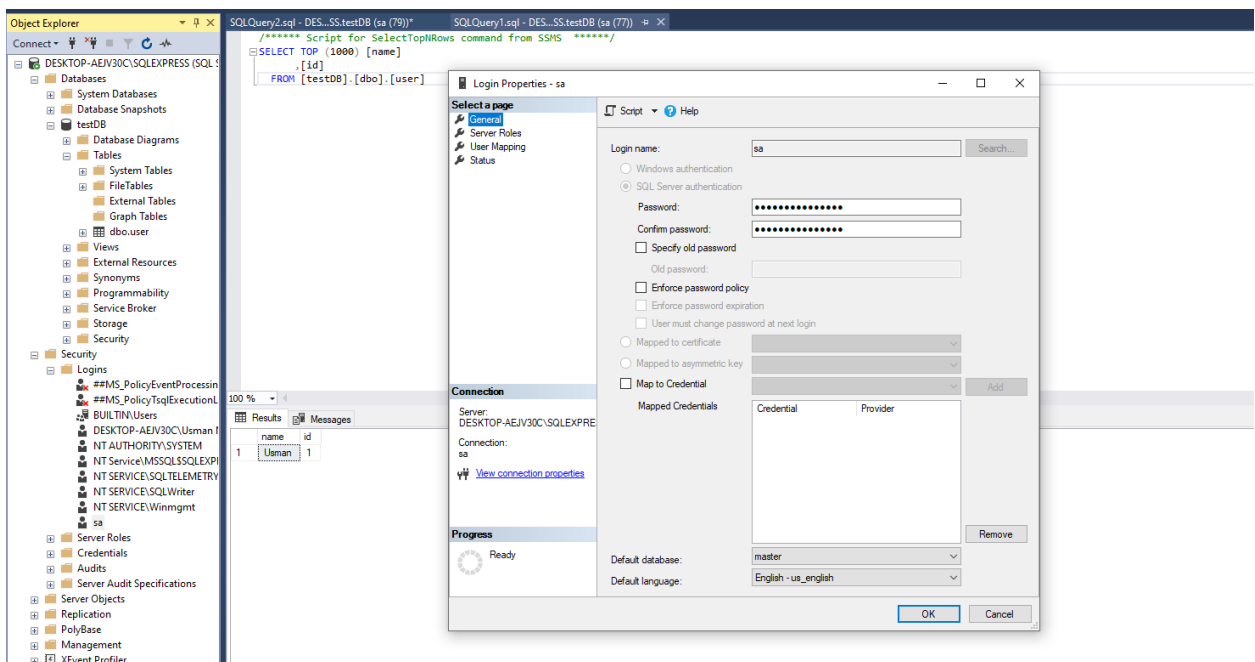
name	id
Usman	1

The status bar at the bottom indicates 'Query executed successfully.'

- Click **status** on the left side of window
- Click on **Enable** check



- Then click on **General** TAB
- Set **Password** for sa User



- Right click on **Server** and click on refresh button to active your settings